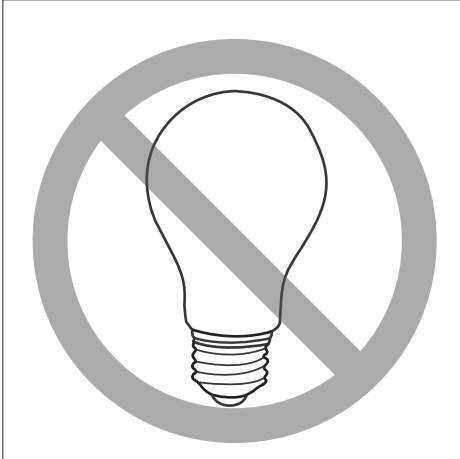


SHROOM Light

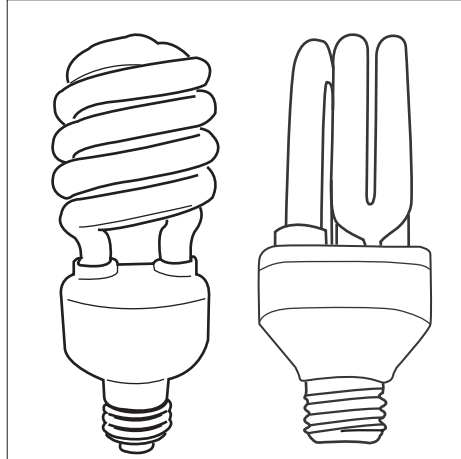
IMPORTANT: Follow instructions carefully! Save instructions for care and maintenance.
Printable instructions available online at: www.mioculture.com/pdf/shroom.pdf

Warning



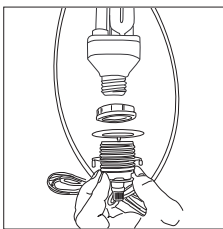
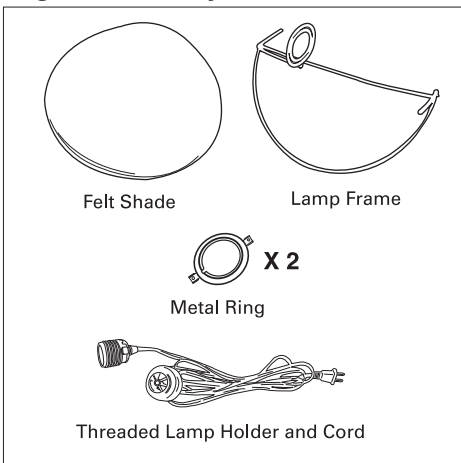
NEVER USE INCANDESCENT LAMPS WITH THIS FIXTURE. IF YOU ARE UNSURE ABOUT A PARTICULAR LAMP CONTACT US.

*****IMPROPER USE MAY RESULT IN RISK OF FIRE*****

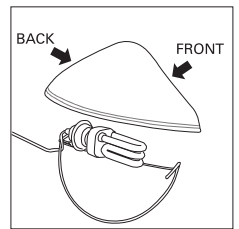
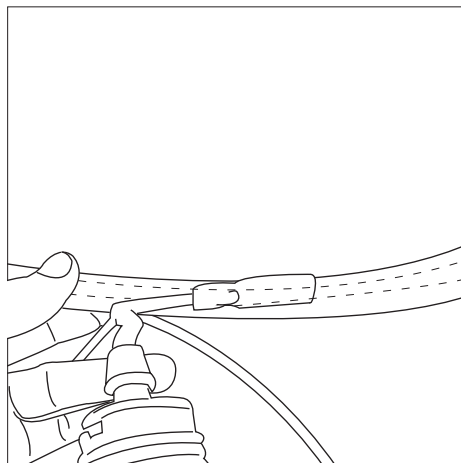


USE ONLY COMPACT FLUORESCENT LIGHTBULBS NO STRONGER THAN 26 W / 120 V WITH THIS LIGHTING DEVICE.

Light Assembly



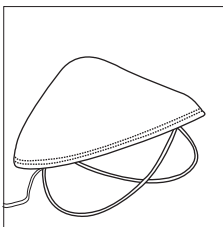
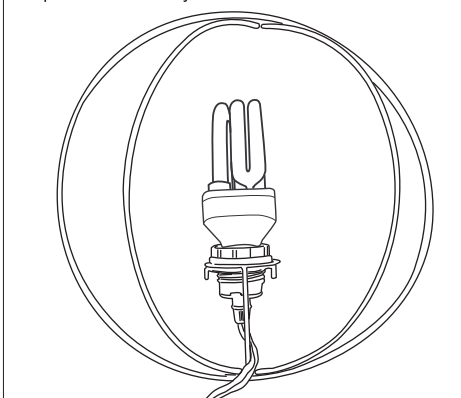
STEP 1 Screw the metal ring so that it sits half way into the threaded lamp holder. Place the lamp holder through the ring of the lamp frame. Screw the plastic ring to secure the lamp holder to the frame. Make sure the wire sits under the frame.



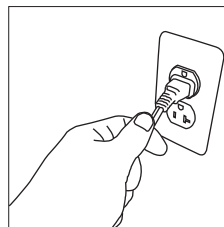
STEP 2 Slide lamp frame into felt shade by inserting wires into the pockets on the inside of the shade.

Install so that the **BACK** of the shade (The one closest to the shades peak) is on the lamp holder side.

Note: Bottom view of correct cord placement and lamp holder assembly.



STEP 3 Place the lamp in the surface to be illuminated.



STEP 4 Plug the lamp to a standard polarized 120 Volt outlet.

Additional Information

For information on lamp selection please contact:
info@mioculture.com
or call us at: 215.925.9359