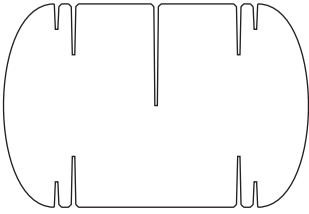
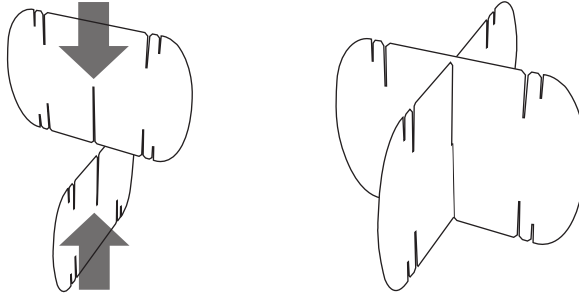


1



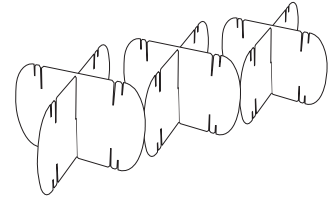
Unpack the Nomad System by cutting tape carefully to avoid damaging modules.

2



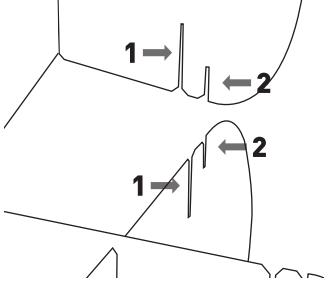
Insert one module into the other along the central slot creating the X assembly shown above. Repeat this step for all modules.

3



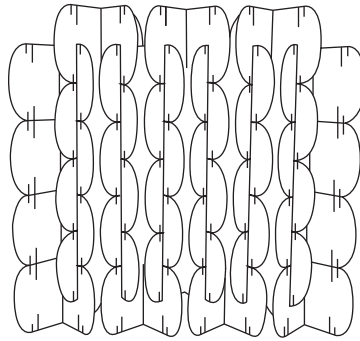
Arrange one row of X assemblies in the desired wall perimeter. Leave approximately one inch (2.5 cm) between X assemblies.

4

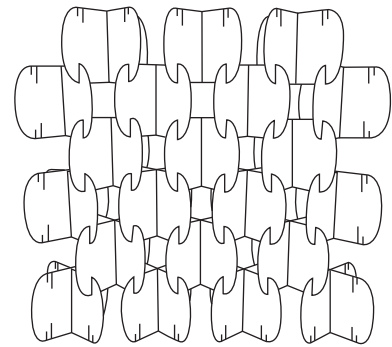


Insert subsequent rows of X assemblies into the bottom row. Use the large side slots (#1) for closed configurations or the small side slots (#2) for open configurations.

Closed Configuration

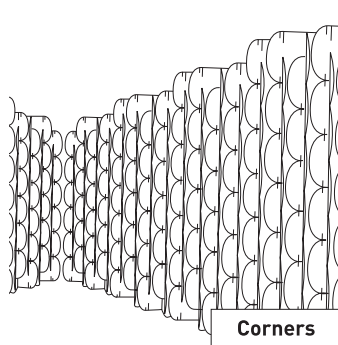
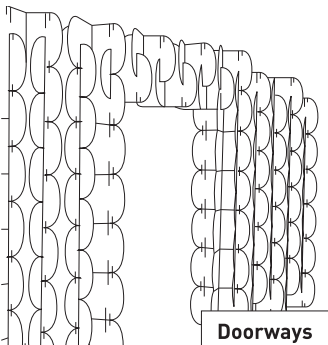


Open Configuration



IMPORTANT: Use the selected slot configuration throughout the entire assembly. Each box contains 14 sqf (1.3 sqm) in the closed configuration or 20 sqf (1.8 sqm) in the open configuration.

Additional Information



MIOCULTURE.COM



All trademarks, service marks and trade names (MIO, product names and the MIO logo) are owned and registered by MIO. All content including but not limited to text, designs, graphics, photos and all other content ("Content") is a collective work under the United States and other copyright laws and is the proprietary property of MIO. All rights reserved. ©2019 MIOIM LLC